

# UTS standing

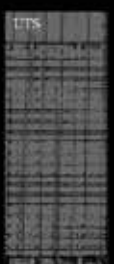
The Building 1 and Building 2 Platform Extension creates a unique opportunity for UTS to re-image the entry to its most prominent landmark, the Tower, and in doing so re-image the University itself. UTS is an urban campus that is embedded in the life of the city. The entry to such a campus must embrace its relationship to the city whilst promoting the values and consistency of the university. The design for the Platform Extension creates an articulated university entrance that is light, transparent, open and welcoming. The successful facade is both playful and contemporary, a fit to the historical architecture of the Tower above. The architecture across the entry performs as a platform for the display of new trade presentations. The planning allows the building to cater for large events and small specialist presentations with open floor plates ensuring maximum flexibility of use and the continuous activation of space.

The new Platform Extension promotes UTS as a dynamic place of research and creativity. This building is a showcase and a space for active collaboration between the University and industry on both a local and global level and will in turn attract the most innovative industry leaders and the highest calibre of students to participate in the ongoing life and work of UTS.



The Tower expresses strength and monumentality in architecture and is a monument to the architectural philosophy of its time. By contrast, the Podium Extension is required to be almost invisible, a veil to the tower, soft, undulating and light. A feminine foil to the 70's Tower above.

The new Podium Building with a leading example of contemporary architecture promoting innovation at UTS through the university's own built environment.



**hard heavy masculine**



The new UTS Podium building's material distinctness from the Tower softens the university edge. The Podium Extension is light, transparent and open in direct contrast to the Tower's enclosed teaching and administrative levels.

**soft light feminine**

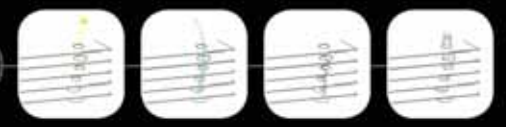


The planter forecourt creates a forecourt in front of the building entry and draws people into the foyer.

The generation of form, entrance / programmatic distribution / courtyards / services



Perforation of floorplate, daylighting / ventilation / circulation / structure



A lot of translucent and white pivots is applied to the glazing adding a subtle pattern of a forest across the surface of the glass. This pattern on the facade throws a faint dappled light across the interior space. At night the facade is projected from behind with the lit capturing the image turning a part of the facade into a screen. The intensity of the image is concentrated around the entry where the lit is denser and fades out gradually across the rest of the facade.

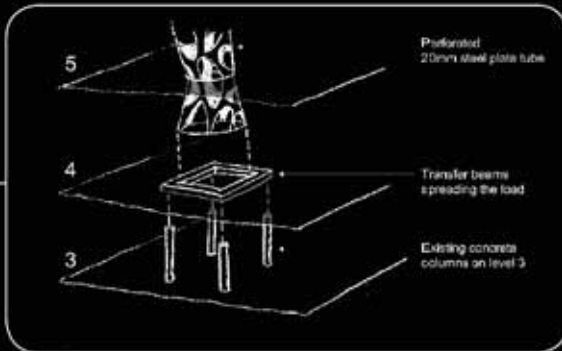
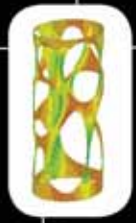
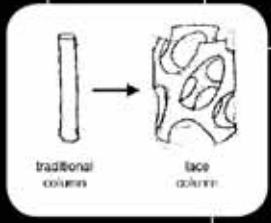


Multi-functional columns vertically penetrate the Podium floorplates. These columns improve structure, circulation, natural ventilation, daylight, and visual connection across the Podium levels.

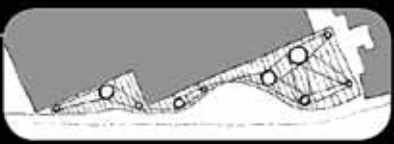
Enlarged and slightly inclined, these elements become objects rather than just structures, allowing the flowways to be free of the clutter of a grid of columns. They provide large expanses of open space to support maximum flexibility of use.



Formed from two sheets of perforated 20mm steel plate, the columns give a sense of lightness to the structure. The perforations in these columns were derived from an analysis of the structural forces on an inclined tube whose aperture varied over a number of levels. The result is a structure that resembles something organic and porous like bone.



The Columns form part of a structural system that integrates with the existing Podium buildings.



The cavity of the steel plates can be filled with water to provide fire protection to the structure, as in the Pompidou Centre in Paris, and can be connected to the sprinkler system.



The Podium Building achieves a sense of lightness through the gently curved glass facade. The curves are achieved by the gradual angling of straight pieces of glass, some of which are warped slightly in place, as has been done on the glass canopy of Air New Zealand. The supporting facade structure is kept to a minimum, letting the facade be as transparent as possible.

The 10th facade of the building, the roof, is considered an important part of the mixing of the new Podium Extension and a space that can be actively used to support innovative BIOD strategies.

The pattern of the perforations in the steel columns is used to provide a layout for rooftop planters. The rooftop planting provides thermal mass, naturally regulating the internal environment.

The back 'verandah' of the northern edge of the Podium where the building meets the Alumni Green is covered by shade louvers with applied photovoltaics capturing energy to support new media screens throughout the Podium.

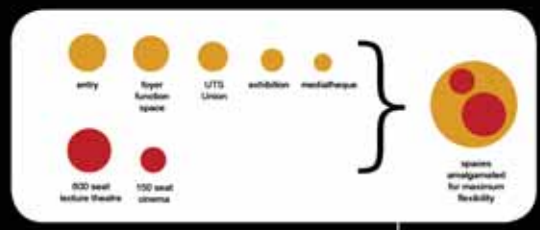
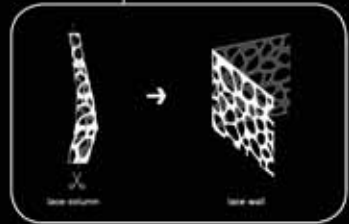


Aerial view

Sunken Gardens perforate the rooftop providing daylight to the various levels of the new Podium Building and important breakout spaces for the building occupants that is protected from the wind and pollution of Broadway.

Wind funnels at the top of the 'lace columns' help support the natural ventilation of the Building 1 Atrium and new Podium Extension, by creating an air flow from the Alumni Green and allowing the southern Broadway facade to be heated to mass and reflect.

The perforations of the steel columns provide a unique pattern that is reused in the design of the facade system proposed for the western and northern edges of the Podium. On these facades the 'lace' provides structure and sun control while carrying through a part of the language of the Podium Extension.



The 'lace' for the Podium contains a number of different programs with highly competitive functions. The key elements of lecture theatre, cinema and bookshop are strategically located in the planning to establish direct connections to supporting program, ease of access and appropriate usability. The remaining program could be more heavily distributed across the various levels allowing the space 'in-between' to be multifunctional - a bar becomes a foyer becomes an exhibition area becomes an informal learning space. This approach to programming ensures flexibility of use and the continuous activation of space.



Level 4 plan (Broadway Level)  
scale 1:500

Broadway

Bar on Level 6



Level 7 plan  
scale 1/1000



Upper foyer with courtyard, Level 7

Level 6 plan  
scale 1/1000



Foyer on Level 6

Level 5 plan  
scale 1/1000



Student union, Level 5

Level 3 plan (Alumni Green)  
scale 1/1000

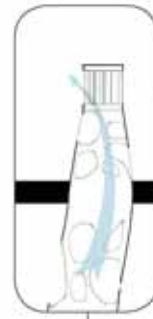
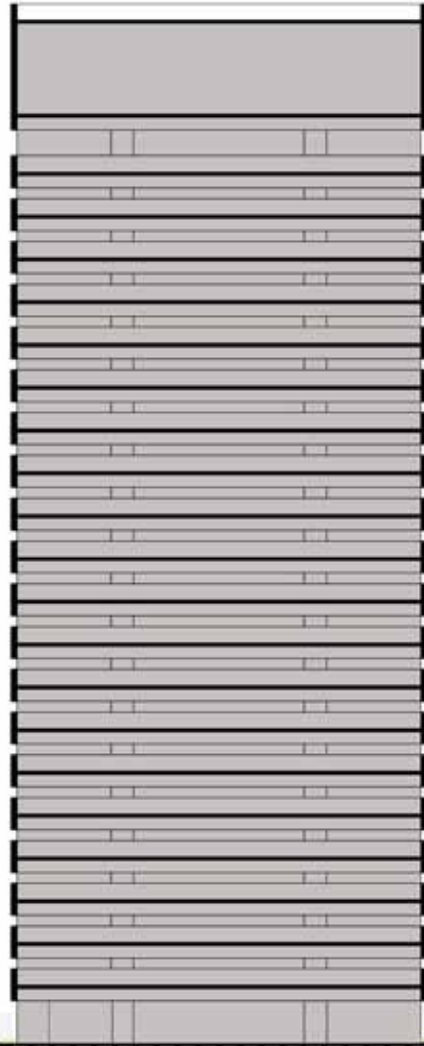


Main entrance, Level 4

Active edge below the Library onto the Alumni Green



View of the Alumni Green

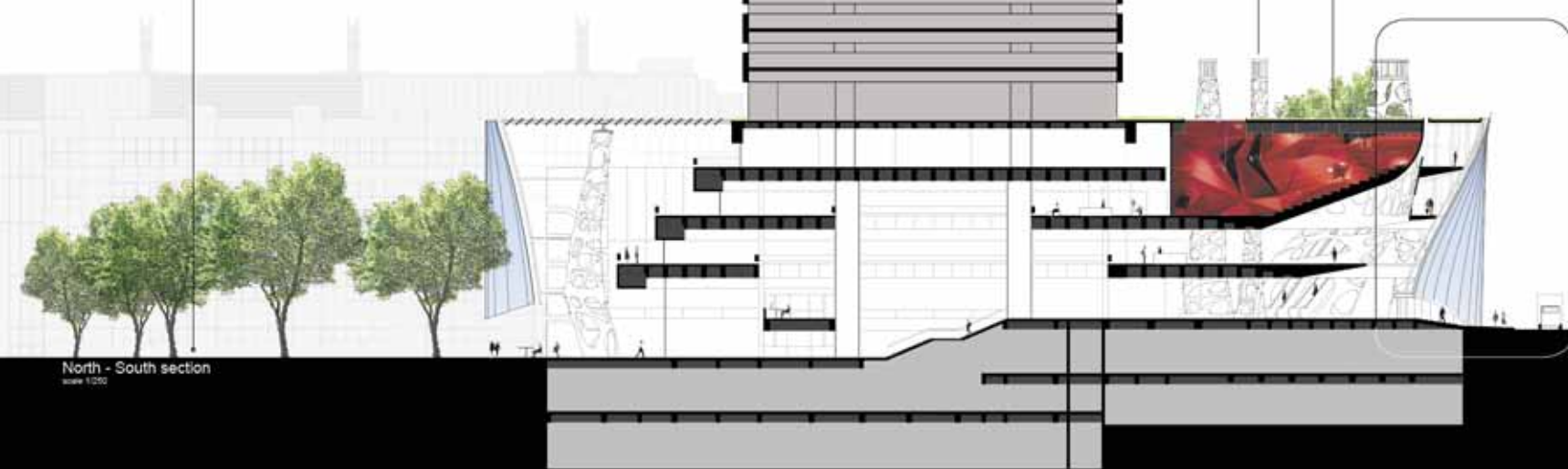


Wind turbines cap the tops of the service columns taking advantage of the Broadway wind tunnel to help draw natural ventilation through the building. These turbines also generate electricity to support new media applications throughout the Publium.

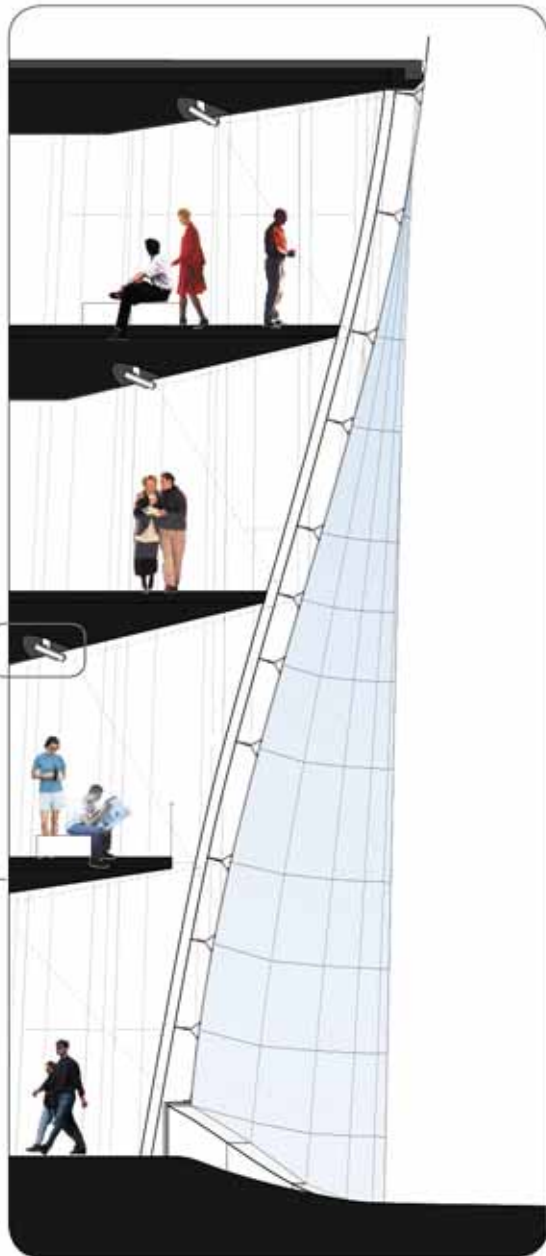


Sunken roof gardens provide protection from the wind and pollution from Broadway creating a green space and another social zone for students and the public. The facade of the building flowing down into these gardens channels rainwater off the roof into storage tanks located underneath the gardens.

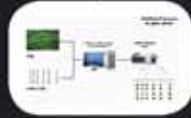
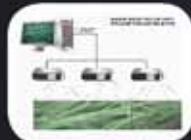
The Broadway facade has a white ceramic frit applied to it in the pattern of a forest of trees. In the sweep of the main entrance, the frit changes to a denser, translucent frit that is the screen to project moving and still images. The images mark the entrance to UTS dynamically and are clearer within the sweep of the facade, fading to white frit as they approach the forest of trees.



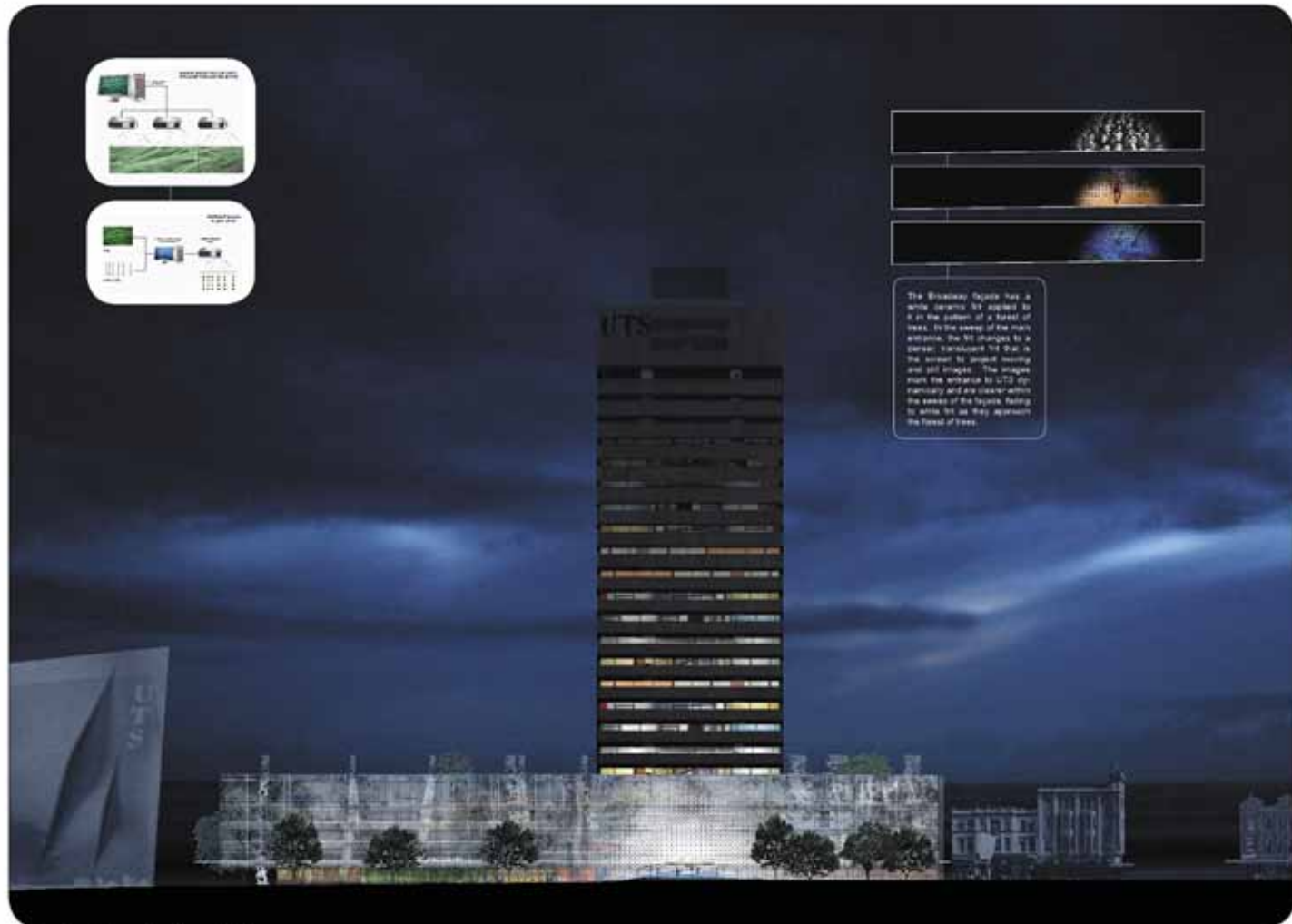
North - South section  
scale 1:250



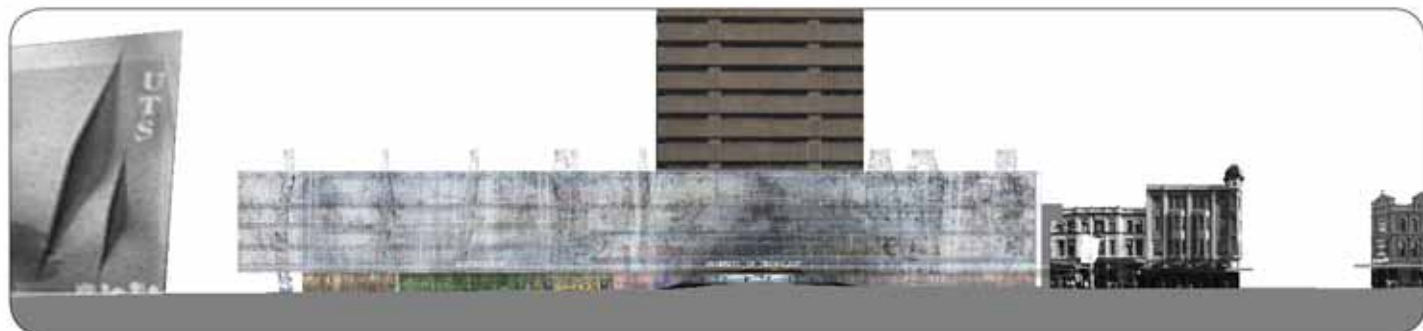
Facade section  
scale 1/50



The Broadway facade has a white ceramic tile applied to it in the pattern of a forest of trees. In the evening the many windows, the tile changes to a darker translucent tile that is the perfect fit against incoming and still bright. The design evokes the architecture of UTS, the university and are located within the canopy of the facade, facing to white tile as they represent the forest of trees.



Broadway elevation at night  
scale 1/500



Broadway elevation  
scale 1/500