



Building One's brutalist glacier forms are fragmented at the street edge into shards of translucent civic space.

The University's many-faceted edge advances over the public way, engaging passers-by in its displays.

A reconciliation between the tower and smaller, well-loved areas is achieved by new human-scaled spaces between the Tower Fragments.

Unified by existing stairs and lifts, the new lends vitality to the old, and fresh life is breathed into the old Podium from the Alumni Green.

Plants and trees give a cool, conservatory atmosphere to the Display Case.

The intellectual pursuit of fresh insight, cleaving from the iconic mass of established knowledge, is showcased here on Broadway.

Elevated and luminous, the Display Case invites exploration through its boldly incised entrance.

The iconic Building One is preserved and emulated in the new Podium's geometrical plan and use of unadorned materials.

The weight of the tower is alleviated by the lightness and uplift of the new forms.

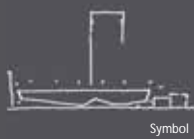
Controlled sunshine, filtered fresh air and thousands of tonnes of retained building material are included in our ESD strategy for the new building.



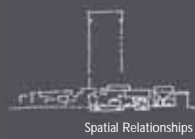
Fragments



Display Case



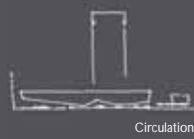
Symbol



Spatial Relationships



Garden



Circulation

SPECTRUM SHIFT – A contemporary integrated art work is incorporated into the 'Tower Fragments', uniting architecture and painting as a reflection on that ancient unity between space, painting and decor, between art and daily life, when art did not yet require any special justification.



"The translucency of ice and the refractive nature of icebergs has brought forth interpretations of the spectrum shift as an idea to permeate all facets of the work."



Ground Plan Voids & Teaching
350 sqm



Cinema
150 people



Co-op Bookshop
600 sqm



UTS Union
350 sqm



Theatre
600 people



Library
3250 sqm



Composite



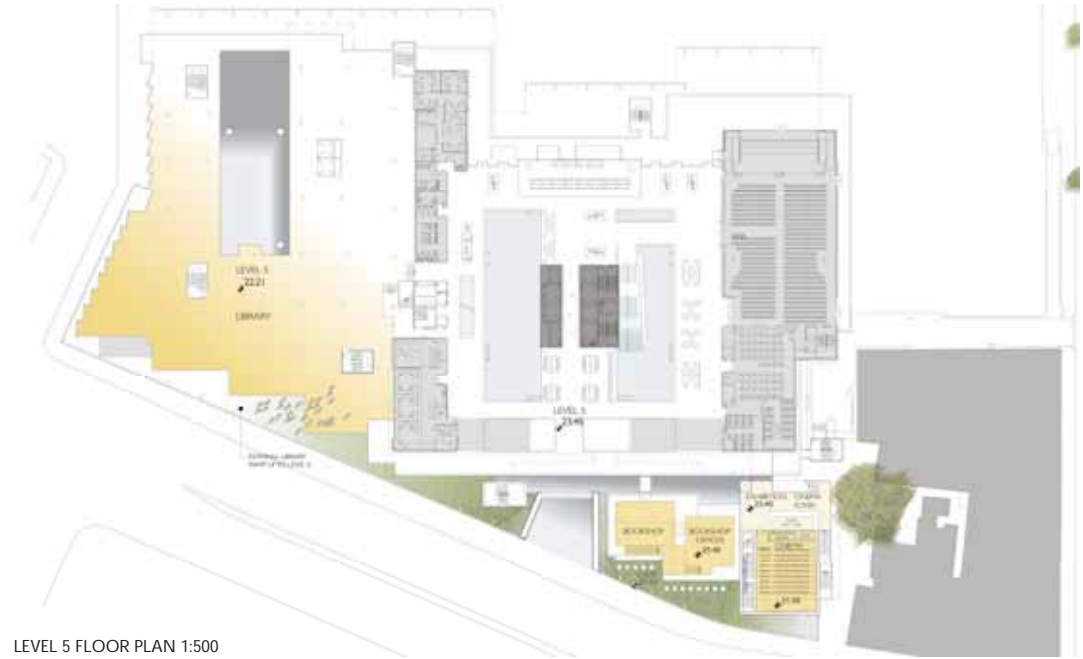
Area Schedule

SPACE	AREA	LOCATION
Entry	460m ²	Level 4
Cinema	170m ²	Level 5
Lecture Theatre	580m ²	Level 6, 7
Mediatheque	170m ²	Level 6
Exhibition Space	170m ²	Level 4
Cinema Foyer	118m ²	Level 5
Exhibition Space		
Theatre Foyer	275m ²	Level 7
Co-op Bookshop	600m ²	Level 4, 5
Co-op Bookshop	200m ²	Level 2
Operational Area		
UTS Union	350m ²	Level 6
General Teaching Space	300m ²	Level 3
Library	3250m ²	Levels 3-8

LEVEL 3 FLOOR PLAN 1:500

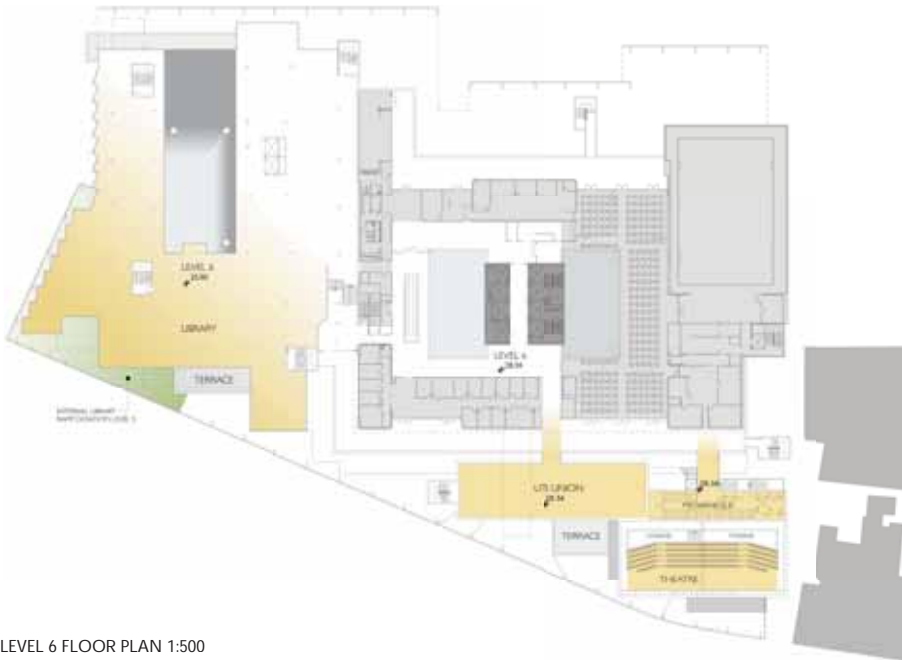


LEVEL 4 FLOOR PLAN - GROUND 1:500

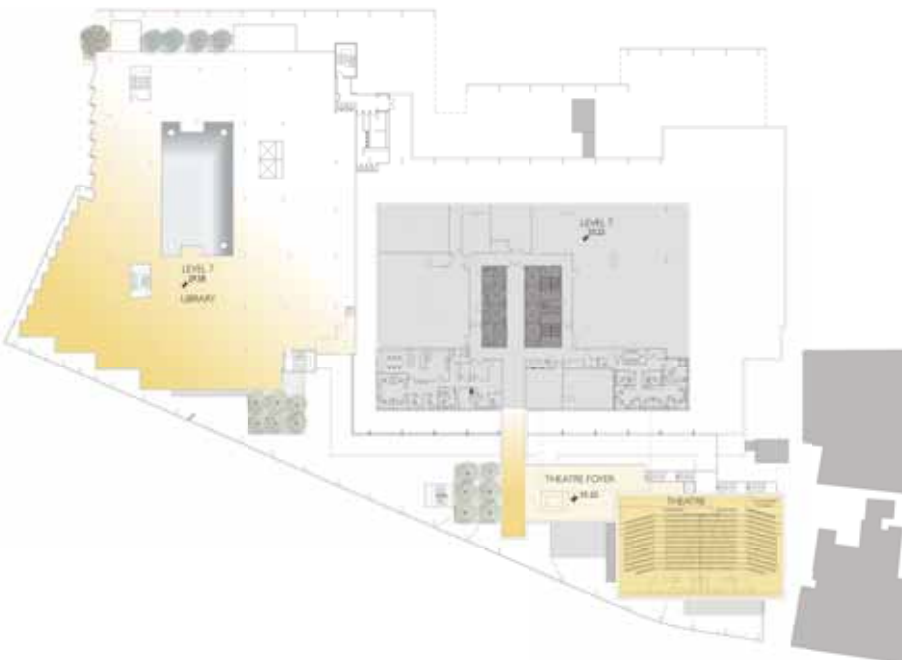


LEVEL 5 FLOOR PLAN 1:500





LEVEL 6 FLOOR PLAN 1:500



LEVEL 7 FLOOR PLAN 1:500



LEVEL 8 FLOOR PLAN 1:500



Bus stop entrance



Library forest Level 7



Ceremonial entrance



Cinema Centre from The Loft courtyard

TOWER FRAGMENTS EXPERIENTIAL QUALITIES

Artwork for the tower fragments responds to the buildings activities in a variety of ways.

THEATRE

LED light patterns imbedded into the structural glass of the Theatre Skin in the geometrical diagram of a Wwavefront, providing at night an interactive wave motion flowing down the skin, in response to theatre sound or the flow of people coming and going.

CINEMA

Laminate Dichroic Film into the structural glass of the Cinema Skin would provide a new façade with an interactive element such as sound. The proposal is for a work uniting architecture and image as a reflection on the unity between urban space and ornament, between art and daily life.

LIBRARY

Radiant Light Film would reflect subtly changing light on its surface giving the effect of organic 'breathing' alluding to the library's quiet and meditative environment.

CO-OP BOOKSHOP

Illuminated paths similar to an aeroplane route map (network connections and flow) could be programmed to light up particular geographic links, representing current exchanges of ideas that find realisation within the UTS Broadway Podium. The coloured glass would relate to activity on the map through its varying degrees of intensity.

UTS UNION

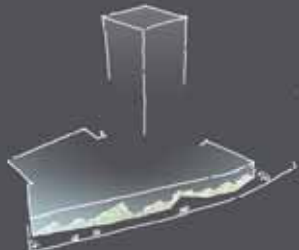
Optic fibre stimulated by touch would be imbedded in the skin of the UTS Union in reference to a network of individuals coordinating as coherent entity. The response to touch would operate like a wave or swarm, emanating from touch in a similar way to the illuminating plankton sometimes found on beaches, and focussing on the public as an integral link in the network.

PLANT

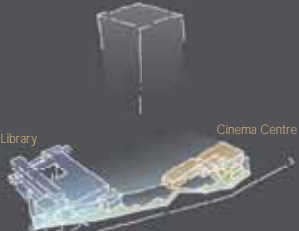
Points of light could travel across the Plant as a flow of circulating energy. Movement would be prolific, and energetic during the working day merging into sparse and subdued at night, in reflection of the internal activity. This would be an artistic interpretation of the Interactive Sustainability board, located in the ceremonial entrance, informing students and passerbys on the building's water and energy statistics.



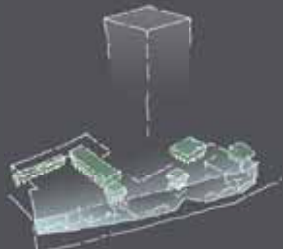
CONTENTS OF DISPLAY CASE



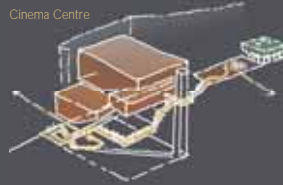
Elevated ground plane



Programme anchors



Conservatory Display Case
Landscape of native plants and trees in the Display Case provide moments of green



Circulation
Taking its cue from the sequential structure of cinema and film, the Cinema Centre reveals itself as a series of spaces and events, from Broadway to Building 1



WEST ELEVATION 1:350



NORTH ELEVATION 1:350



Screened natural light to library atrium

Fourteen Uggie provides a weather screen with glazing and insulates atrium to the southern ground 'display case' forming a unified podium for the base of the Building 1 Tower

Transparent, colored and opaque glass 'tower fragments' mediate between the Building 2 tower facade and new Library atrium offering a harmonizing look and a transition from the activities of the Museum Tower and contemporary Museum of the Library



Planting stairs and Uggie are utilized for vertical circulation

Comprehensive links cut into the 'display case' open to the sky

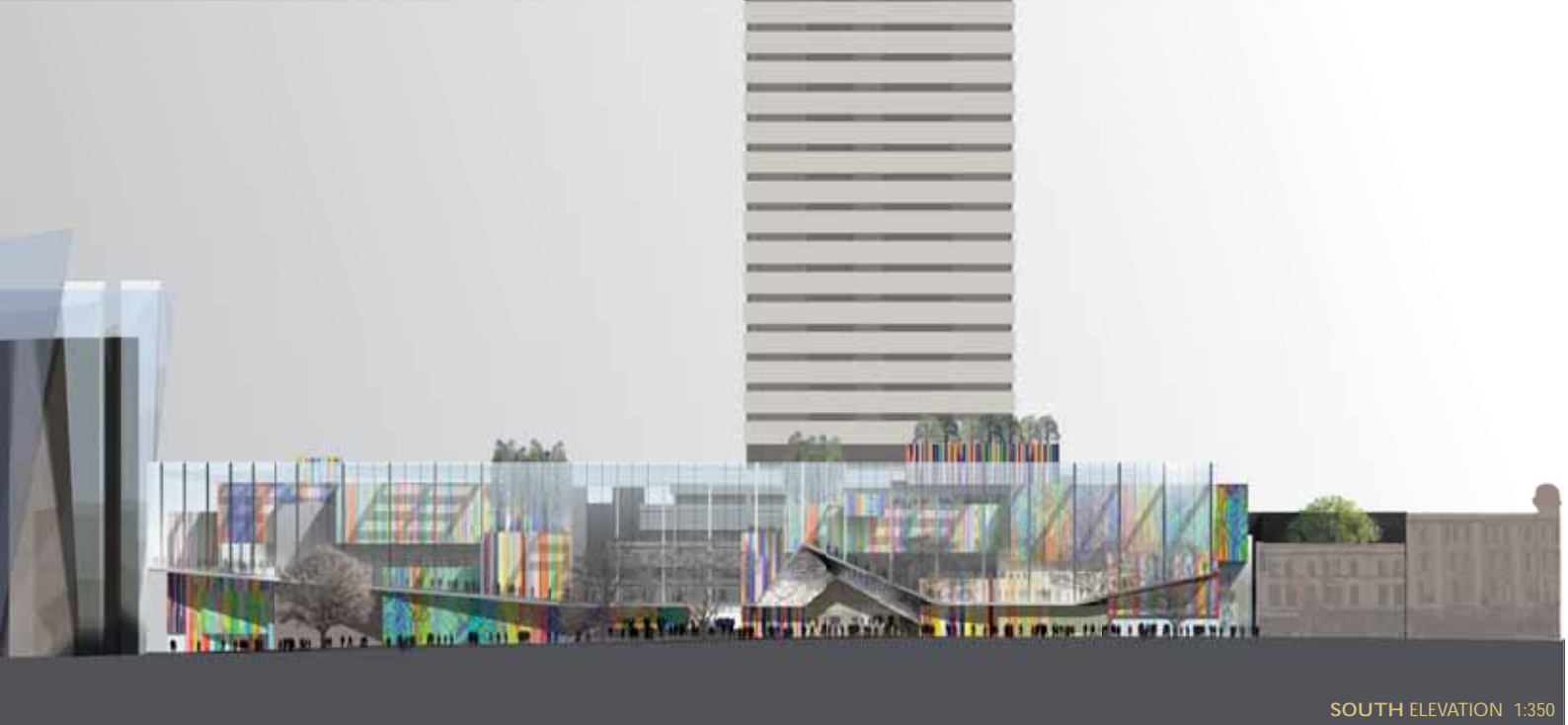
The elevated ground plane makes a stepped landscape connection between Level 5 and 6 of the Library

Uninterrupted verticality in circulation, it is topped as a highly textured and patterned surface comprising vegetation panels and pavement. Plant selection is based on response light levels, creating an organic landscape pattern. Certain broader-leaved varieties include 'Uggie' areas while smaller leafed plants of lighter green inhabit the 'lighter' areas with a range of plant types in-between

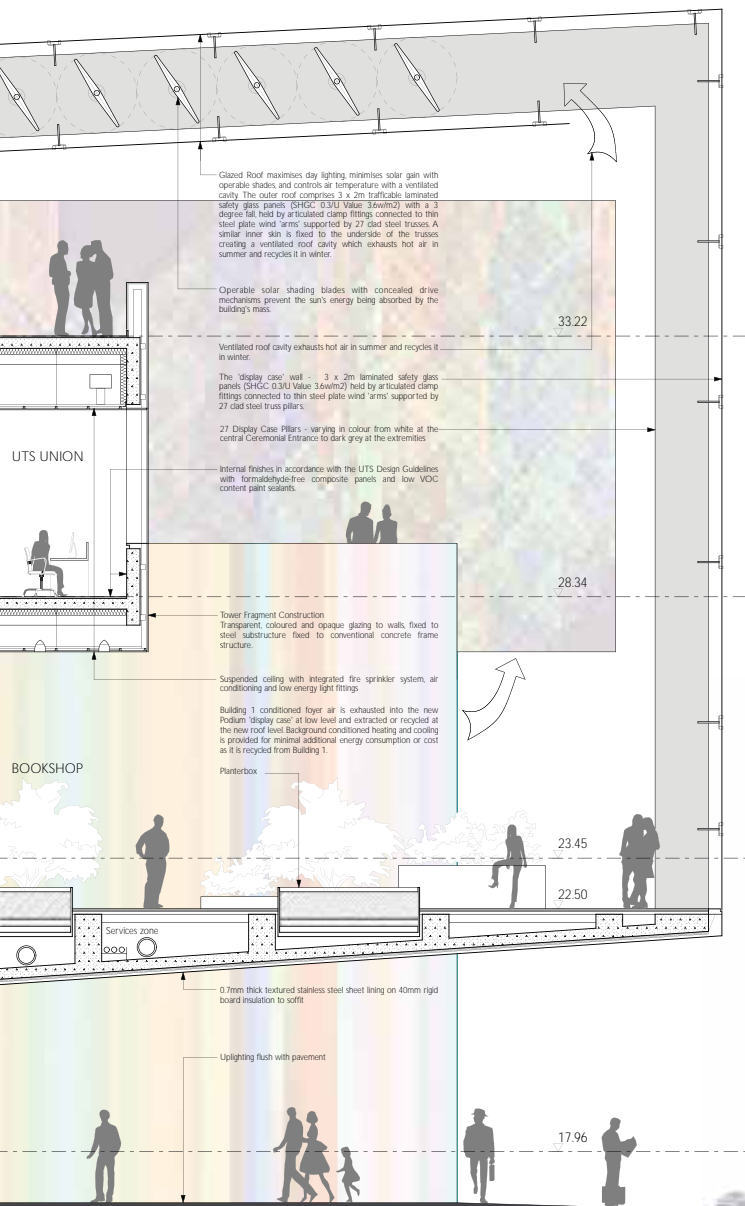
SECTION A-A 1:200

'Tower Fragments' mediate between Broadway, Library and the Alumni Green





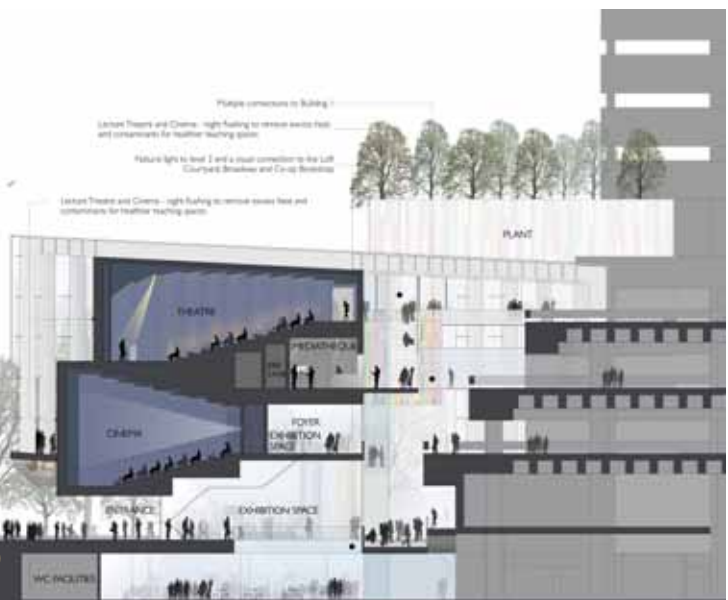
SOUTH ELEVATION 1:350



SECTION B-B 1:200



EAST ELEVATION 1:350



The Cinema Centre comprises a set of interconnected spaces from Broadway to Level 7 and the Tower Atrium



